



Chips^{***}JU

WECS 2024
GHENT BELGIUM
5-6 December

From Chips to Healthcare services
«Advancing the foundations»

Recording ST - EF ECS

2024-12-04 14:45 UTC

Recorded by

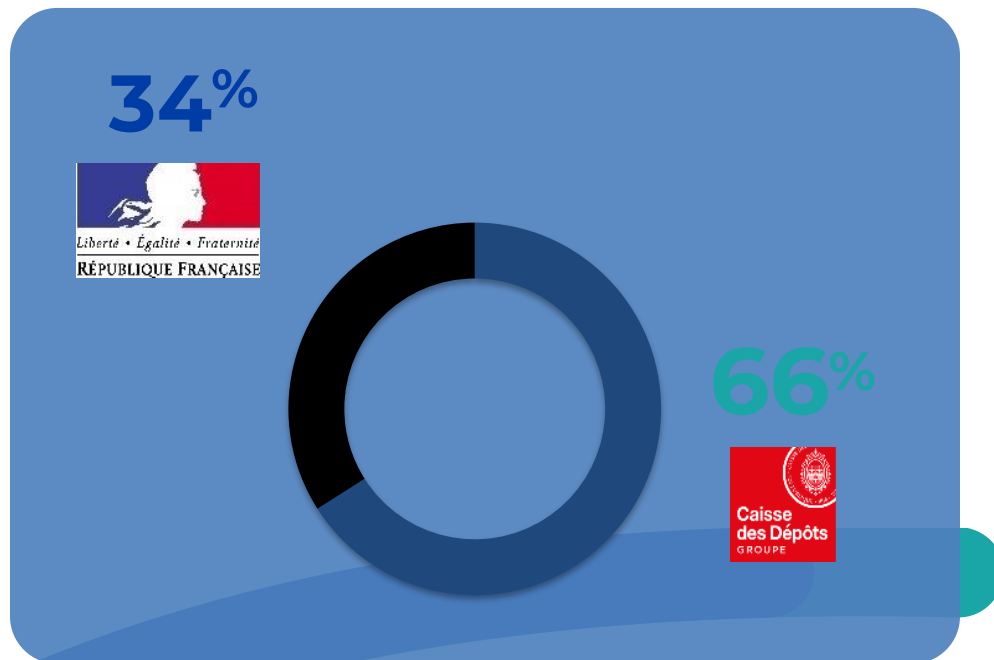
Posada, Jorge

Organized by

Posada, Jorge

CARLA GOMES

La Poste Group, a trusted partner and a mission driven company



34,1 billion€

Sales 2023

232 700

employees 2023
(worldwide)

35 600

Postal service access
points in France

La Poste's 4 public service missions



Universal postal
service



Press transport and
distribution



La Poste's banking
accessibility mission



L'aménagement et au
développement du territoire

Vision Mission

At the service of all, useful to everyone, La Poste, a territorial company, develops exchanges and weaves essential links by contributing to the common goods of society as a whole.

To become Europe's **leading platform** for links and exchanges, **human and digital**, green and socially responsible, at the service of its customers, individuals and businesses, and of **society as a whole in its transformations**

Our positioning: Leading partner in the health ecosystem, providing trusted local human and digital services for our six segments



HUMAN PROXIMITY SERVICES
Health & home care



TRUSTED DIGITAL SERVICES
Health data

Home value chain
Home as a « point of care »

Data value chain
To inform medical, economic, and societal decisions

Healthcare

Astensanté ➤ Diadom ➤

Homecare

axeo services AGE D'OR

CONSEIL STRATÉGIQUE	ÉTABLISSEMENTS DE SOINS	
<p>Une filiale de DOCAPOSTE</p>	<p>Une filiale de DOCAPOSTE</p>	
PARCOURS DE SANTÉ (DIGITAL ET HUMAIN)	VALORISATION DE LA DONNÉE	
	<p>Une filiale de DOCAPOSTE</p>	

Framework of Values

General interest

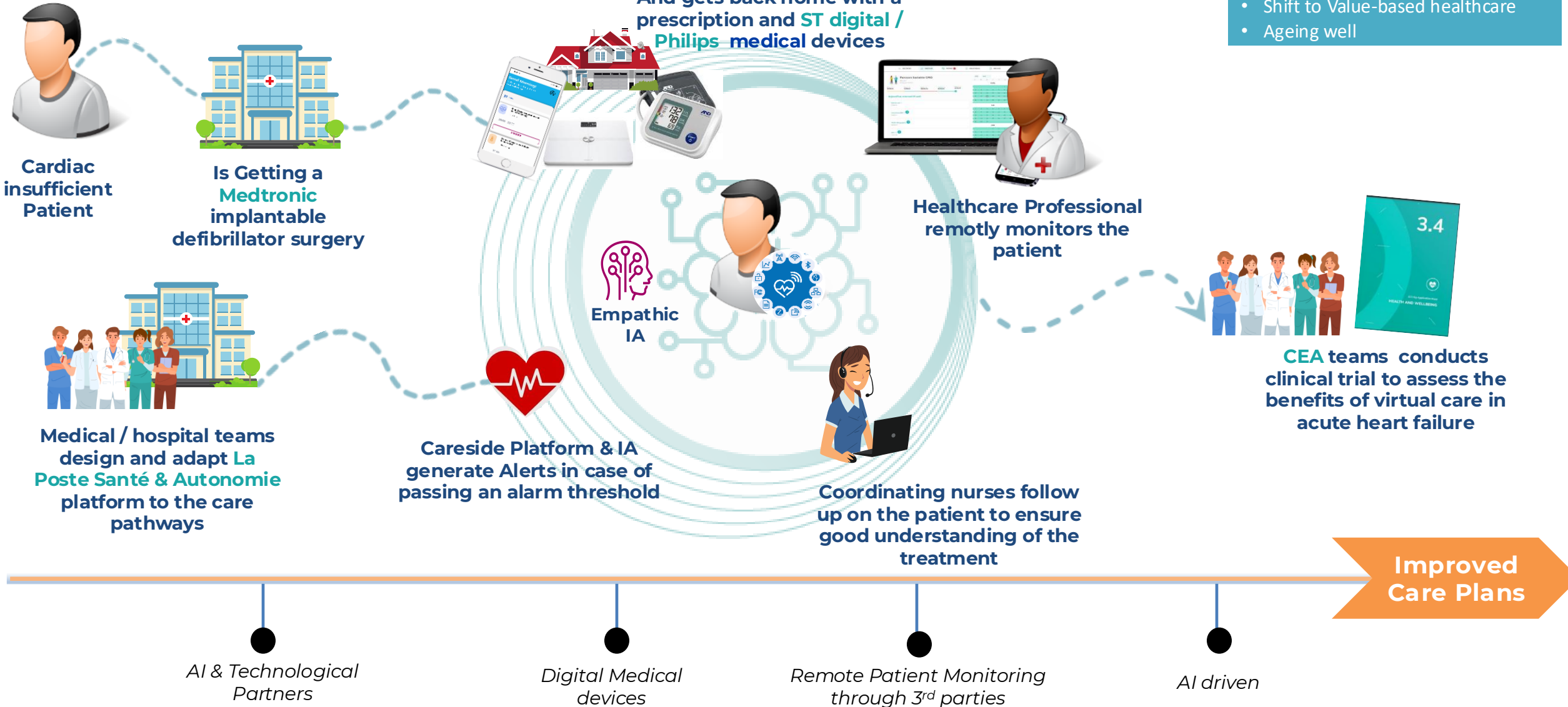
Ethics

Sovereignty

Humanism

Example of Collaboration

- Chronic patient management
- Hospitalization @ Home
- Shift to Value-based healthcare
- Ageing well

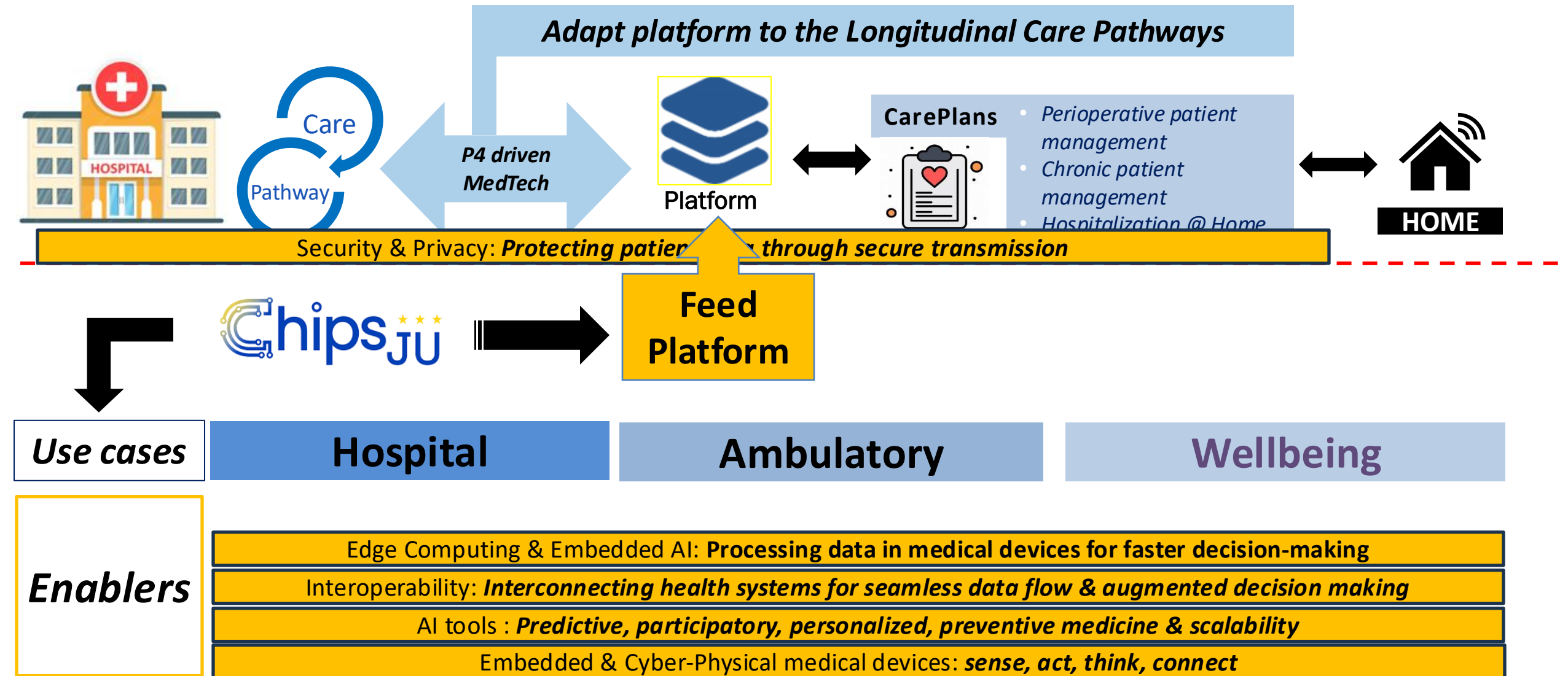


Dr Nicolas HOMEHR, MD, France

French Federation of Primary Care/ AI expert

- President of CPTS South
Toulouse: 150.000 people,
1200 Health Professional
- Former vice president French
Federation of Primary care
- Deputy Ceo at Torus.ai
- AI Expert with the WHO:
World Health Organisation
- Director of innovation of
Groupe Pasteur Mutuality,
Paris

« From chips to healthcare services »: Empowering innovation



WHAT'S FOR?

CHRONIC DISEASE MANAGEMENT

- Cardiac Insufficiency / cardiac disease:
- Chronic Obstructive Pulmonary Disease (COPD):
- Diabetes:
- Hypertension:
- Cancer:
- Mental Health (depression and anxiety):
- Musculoskeletal disease:
- **TOTAL** Many Patients have several of above diseases

ILLNESS (MANAGING DISEASE)

Total Patients Europe: 742M

COST / Year

5.5 M	210B€
36 M	50B€
61 M	150B€
148 M	50B€
7 M	200B€
110 M	600B€
42 M	340B€
#350M	1600 Billions €

ELDERLY > 65 Years old

156 M

HOME HOSPITALIZATION(0.4M), RETIRED HOME(6.5% >65y) 10.1 M

OTHER DISEASES MANAGEMENT

- COVID-19
- Chronic skin conditions
- Smoking cessation and weight loss

One solution... the coordination

emphasizing the importance of collaboration among healthcare professionals to effectively implement these technologies.

Healthcare innovation: *development & integration of advanced technologies – from chips to medical devices to platforms – to enhance healthcare delivery, diagnostics, treatment & patient outcomes*

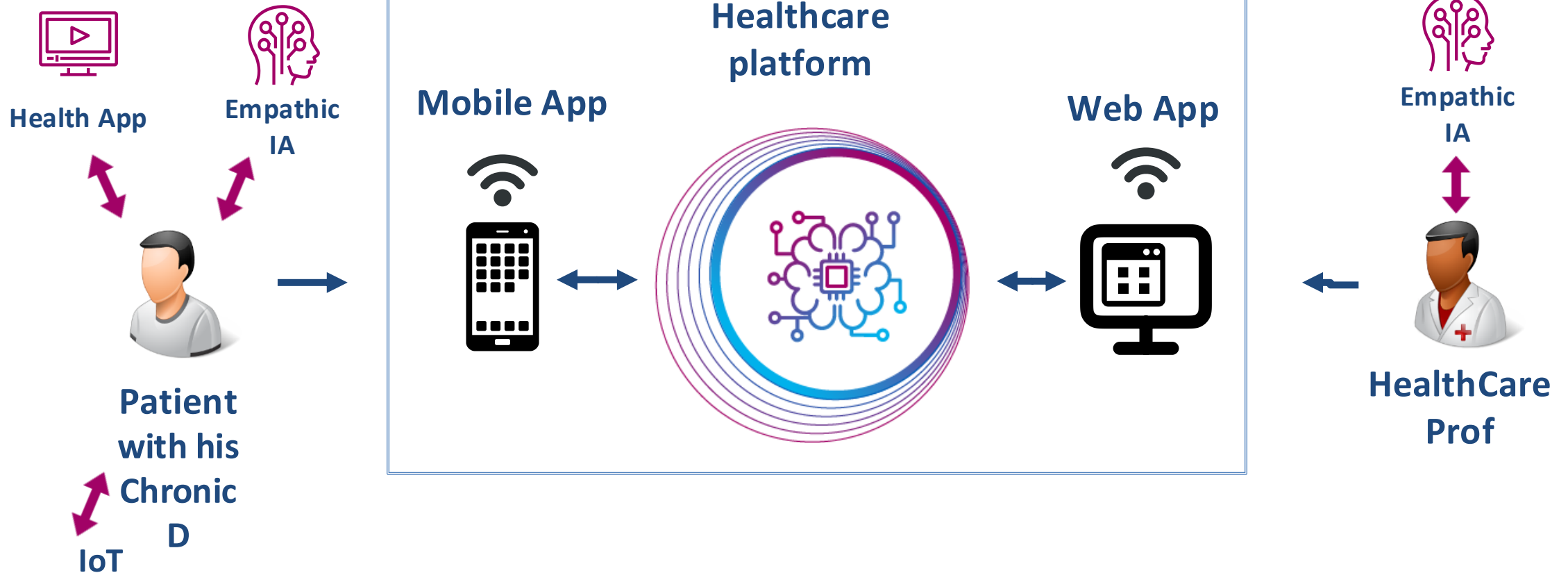
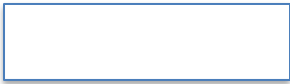
Trust: *confidence of patients, healthcare providers & stakeholders in the security, privacy, reliability and ethical use of digital health technologies & data*

ENVIRONMENTAL by DESIGN



EPEAT (Electronic Product Environmental Assessment Tool)

ISO 14001 / ISO 14040 & 14044 / ISO 50001 / ISO 14062



IoT Chips



Interoperable to all national platforms

J.C. ZERBINI

VINCI Group

In a flash



€61.7bn
revenues in 2022

128
countries

271K
employees



European Testing and Experimentation Facility for Health AI and Robotics

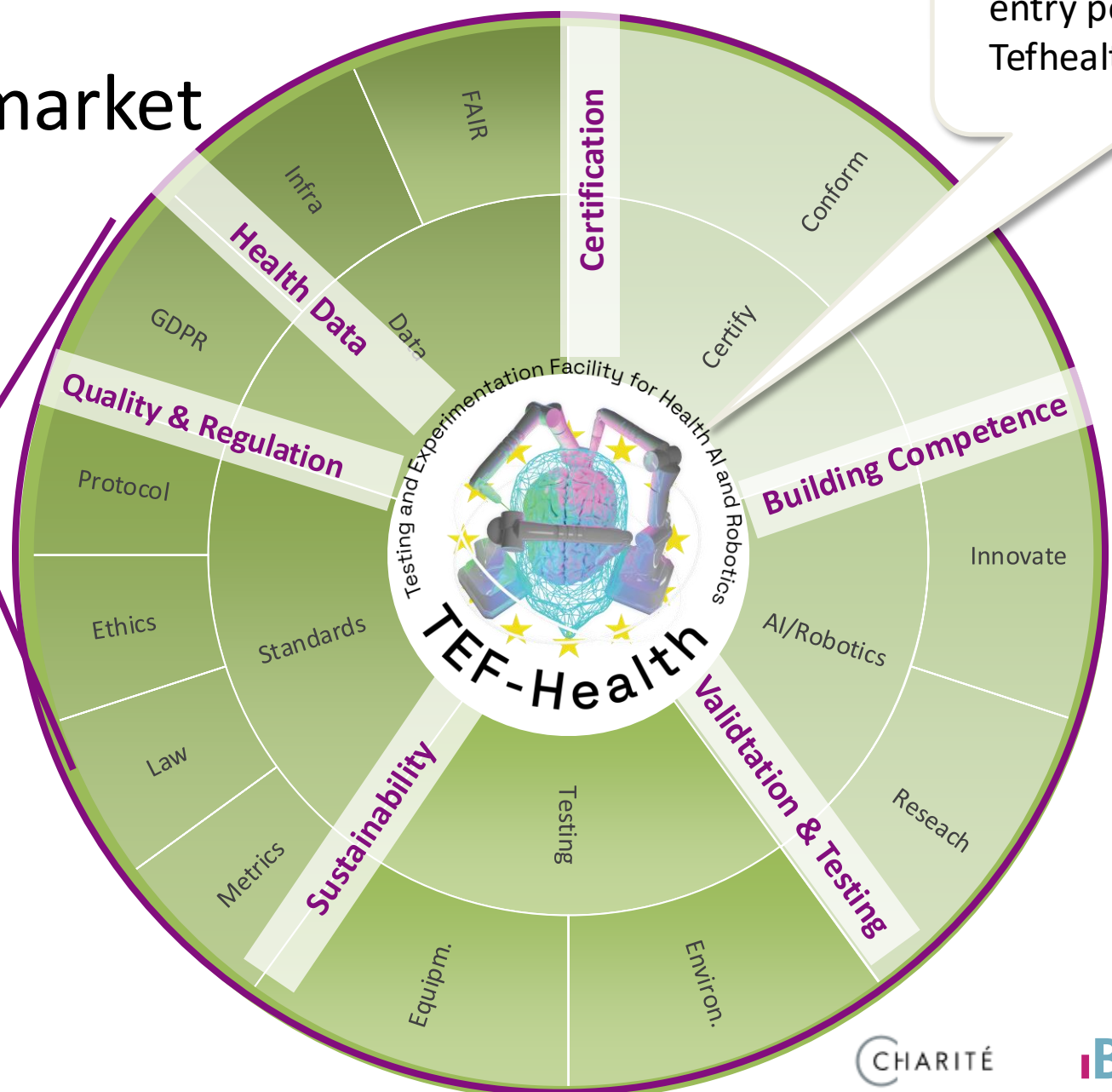
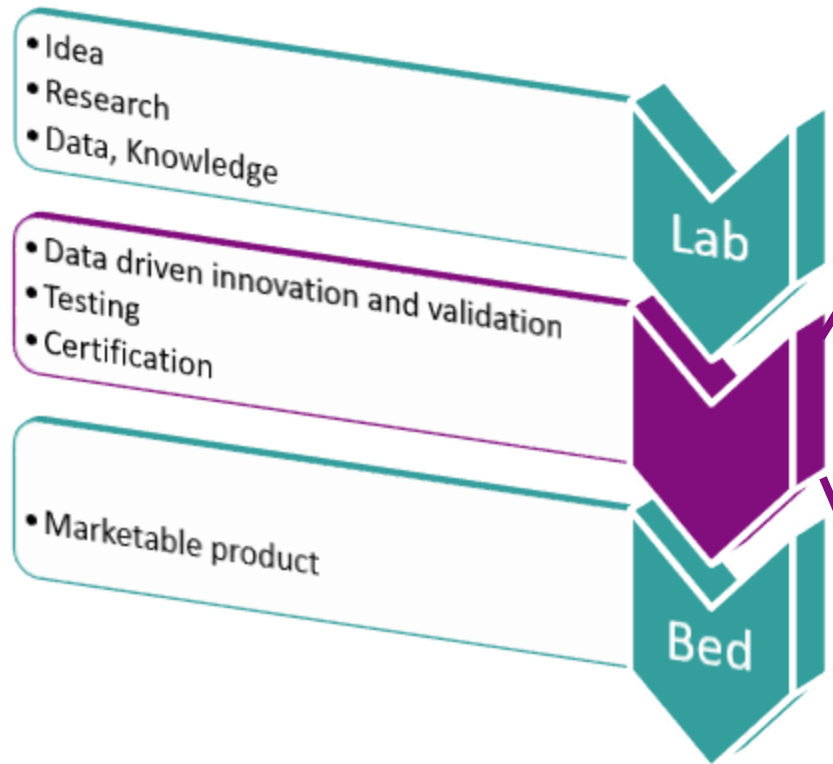


G F E D C B A

Prof. Dr. Petra Ritter (Coordinator TEF-Health)
Charité Universitätsmedizin Berlin, Berlin Institute of Health

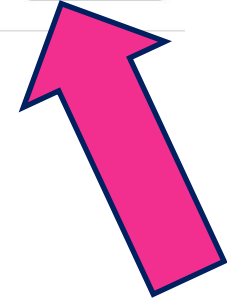
Flywheel from lab to market

Single EU-wide entry point through Tefhealth.eu

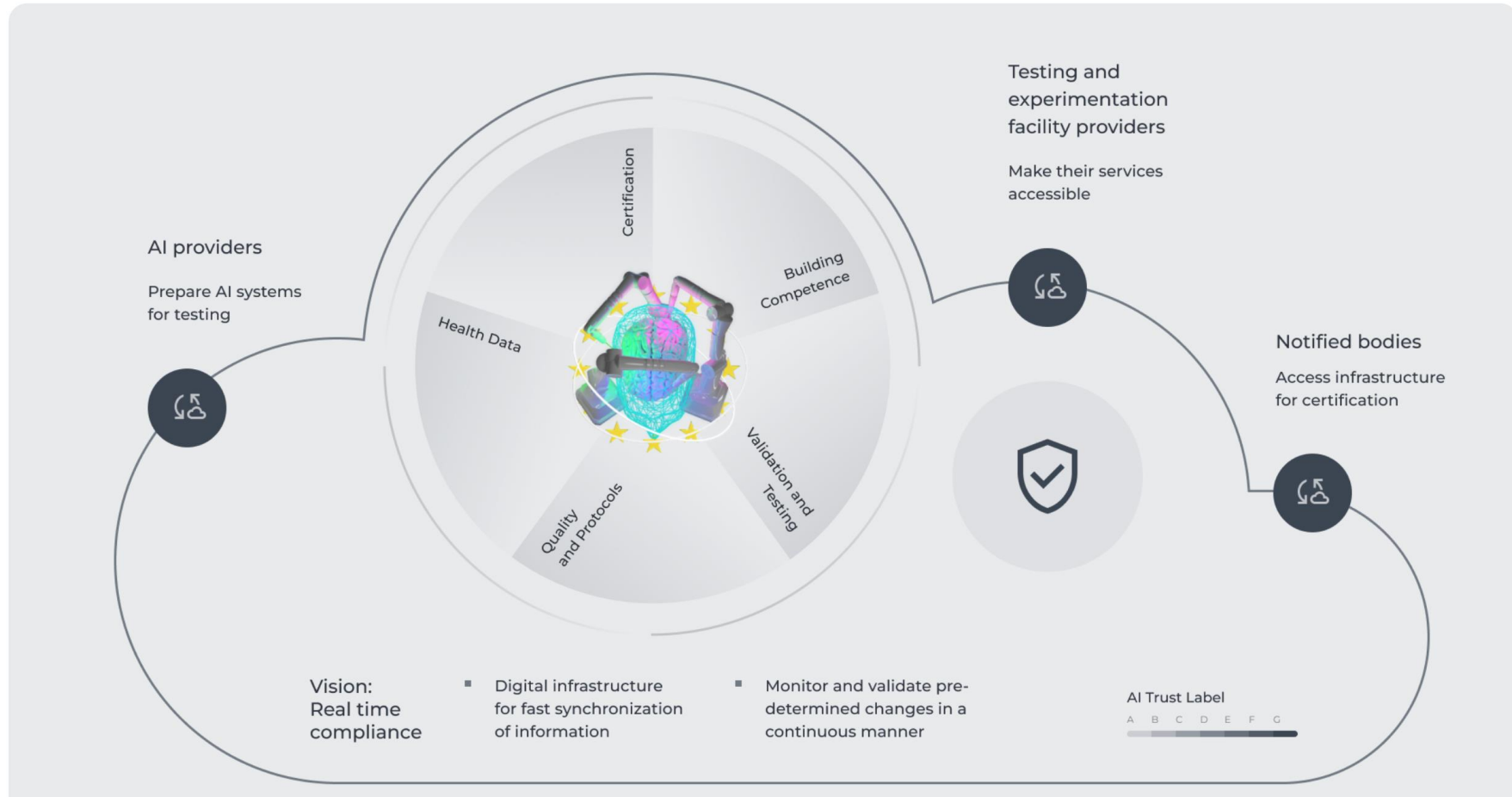


Service Categories:

- Data
- Standards
- Testing
- AI/Robotics
- Certify



Technical and scientific support for Health AI providers and notified bodies



ALEXANDRE GRUTMAN